

**Varsity Park Homeowners Association
Moorpark City Permit Request
Removal 117 Trees
Fire Defense Space Project**

Roger A Mickish 6/19/2021

Moorpark City

Parks & Recreation Director: Jeremy Laurentowski

Parks and Facilities Supervisor: Leland Baxter

VCFD

Fire Protection Officer: Larry Williams

Agenda: VPHOA Requests Permit –

Remove 117 Trees from Site In Compliance With Fire Defense Code

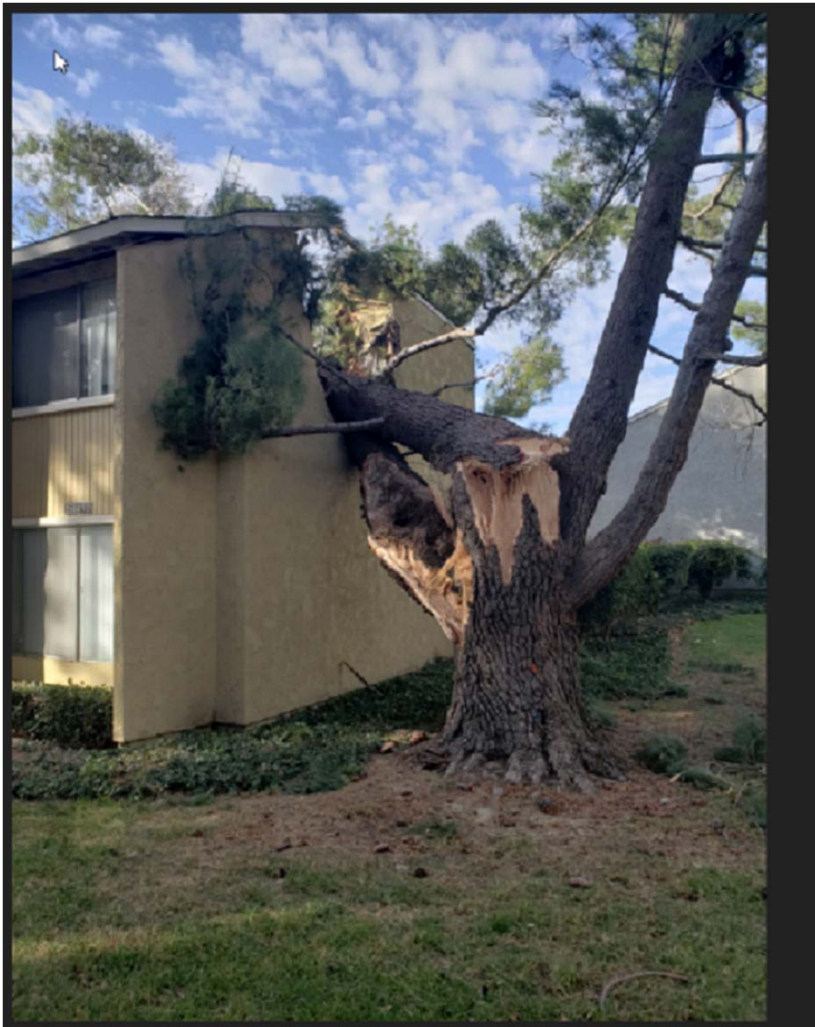
- 1980 Original Landscape Plan – Dense Pack Large Trees Planted Close To Structures & Each Other
- 2019-Present (Prior 18 Months) Santa Ana Winds On Wrong Trees In Wrong Place Damage 7 Homes and Vehicles
- 2012 VPHOA Rezoned To High Fire Hazard
- 2012 – VCFD Develops Guidelines for Proactive Fire Defense Space Program to Correct Wrong Trees Planted In Wrong Place
- 3/2/2021 - 5/27/2021 Completed detailed tree survey and developed plan to remove 117 in alignment with VCFD Defense Space Program – Reduce Wind as well as Fire Life/Property Safety Risk
- 6/19/2021 Submit Request for Permit to Remove 117 trees and Job Walk Site With VCFD fire prevention officer Larry Williams, Moorpark City Parks & Recreation Director Jeremy Laurentowski and Parks and Facilities Supervisor Leland Baxter

1980 Original Landscape Plan

Very Large Wrong Trees Tight Packed In Wrong Place Next to Structures & Each Other



Wind Caused Tree Fall & 7 Homes Damaged Last 18 Months VPHOA Insurance Rate Skyrocketing

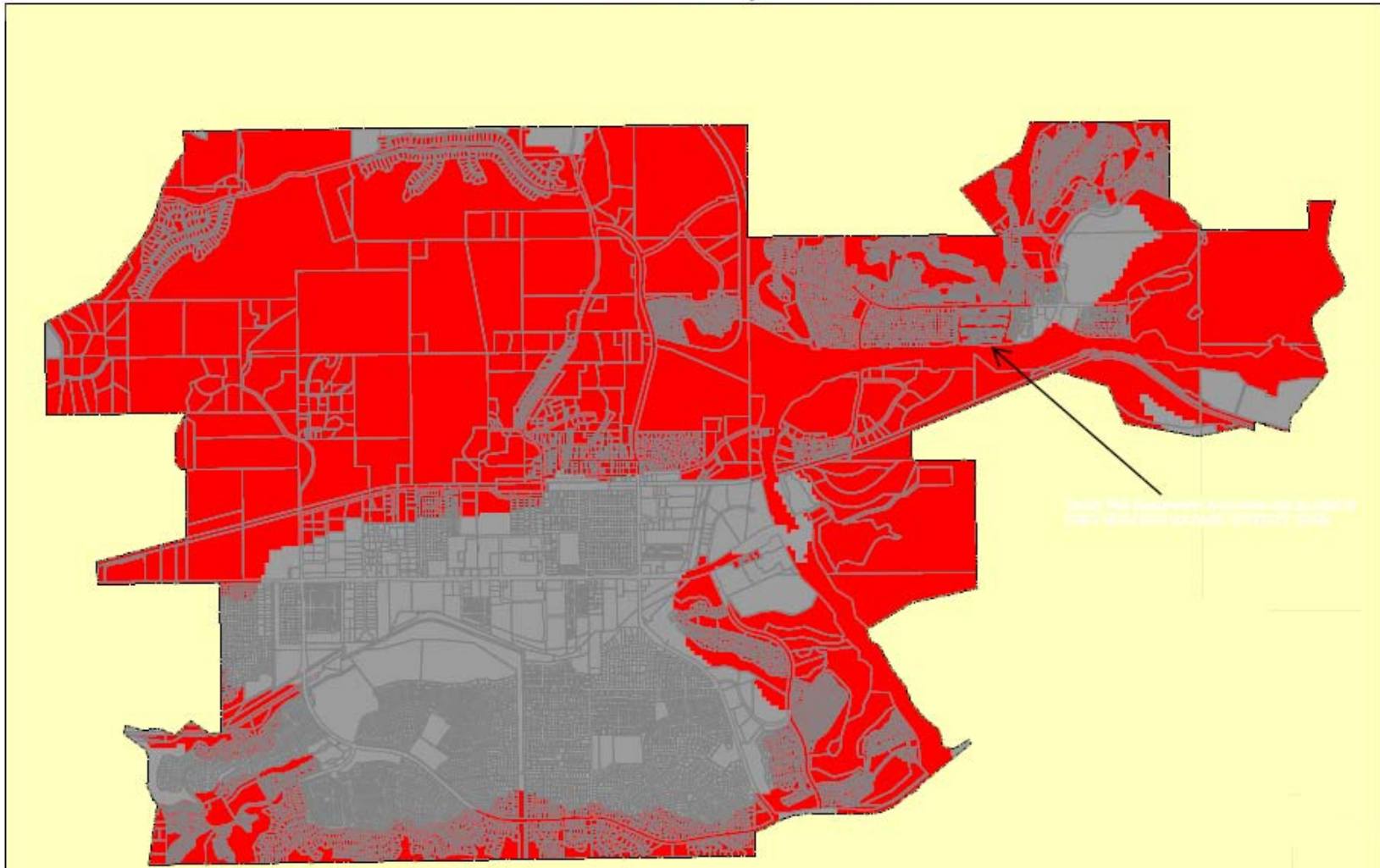


2012 VPHOA Rezoned To High Fire Hazard



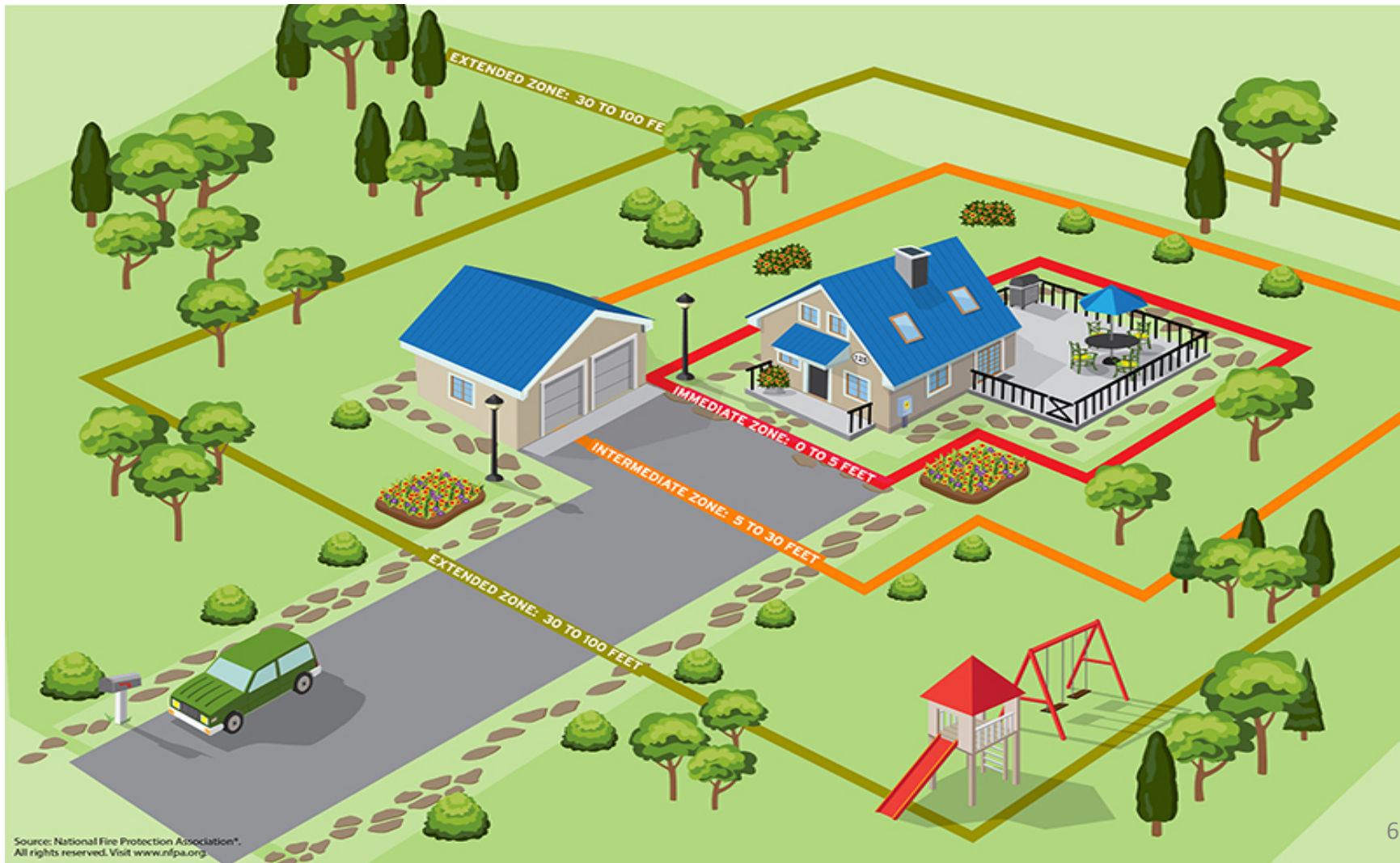
Moorpark

VERY HIGH FIRE HAZARD SEVERITY ZONES IN LRA
As Recommended by CALFIRE



Tree Removal Brings VPHOA 1980 Landscape Closer To Fire Code

Remove 117 Trees/Fuel < 30' From Homes
Reduces Life/Property Risk Both Wind and Fire

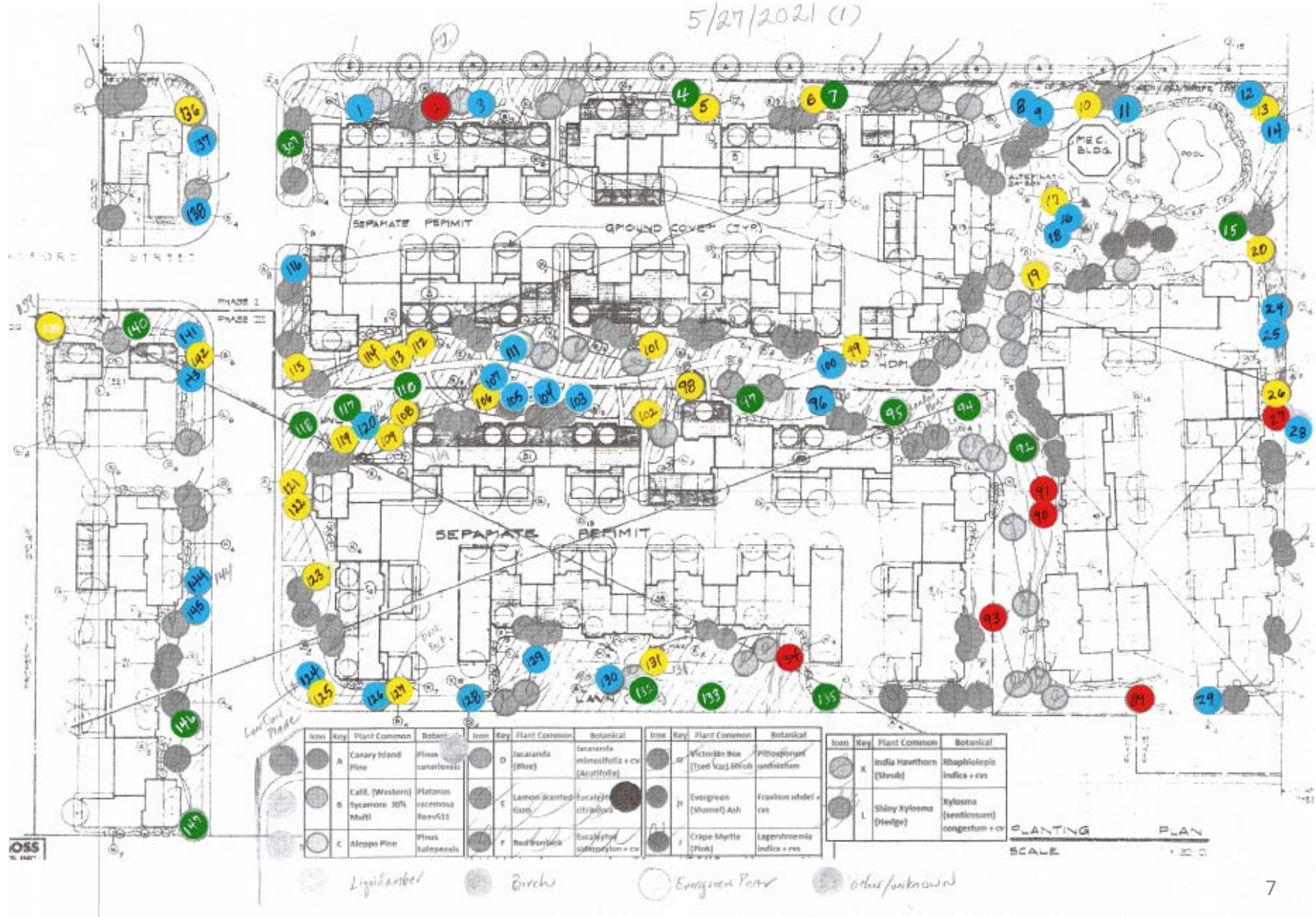


Remove 117 trees Dramatically Reduce Life/Property Safety Risk

Red (Wind, Fire, Other Urgent)

Yellow (Fire, Structural, Tree to Tree, Etc.) 1/4

5/27/2021 (1)

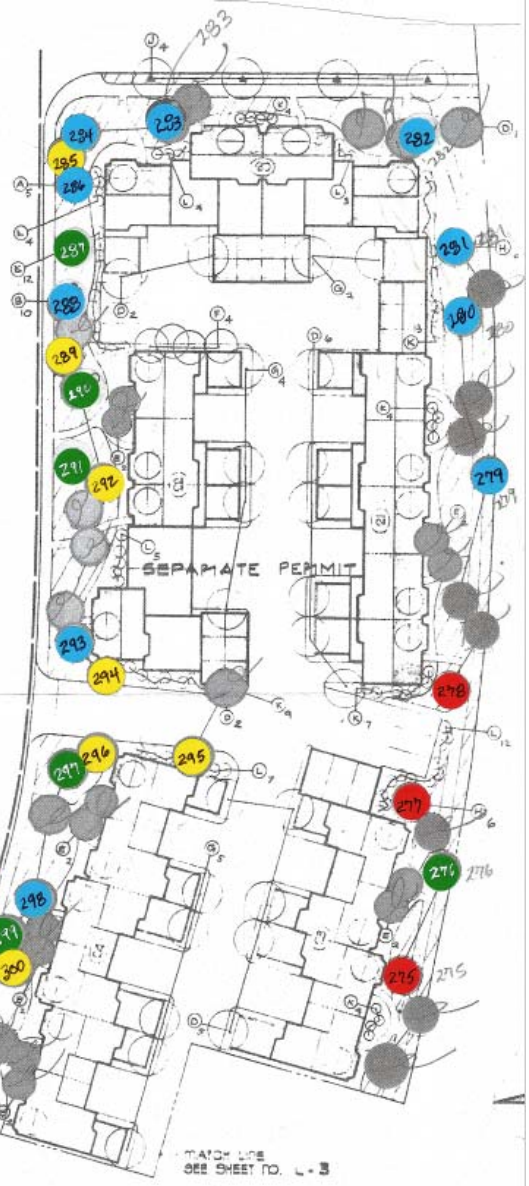
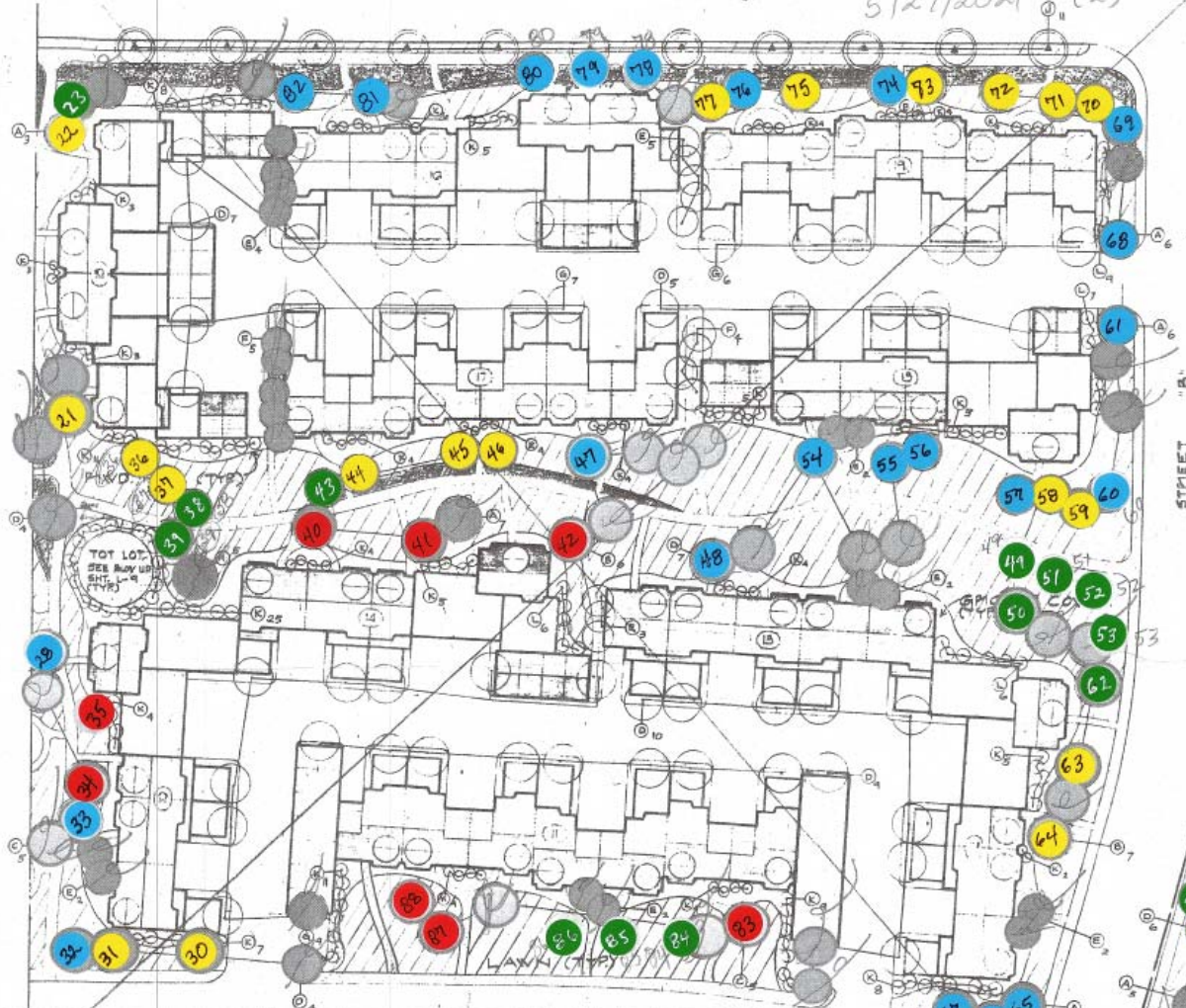


Remove 117 trees Dramatically Reduce Life/Property Safety Risk

Red (Wind, Fire, Other Urgent)

Yellow (Fire, Structural, Tree to Tree, Etc.) 2/4

5/27/2021 (2)



Icon	Key	Plant Common	Botanical
		Canary Island Pine	Pinus canariensis
		Calif. (Western) Sycamore 30% Multi	Platanus racemosa Reev511
		Aleppo Pine	Pinus halepensis
		Jacaranda (Blue)	Jacaranda mimosifolia + cv (Acutifolia)
		Lemon-scented Gum	Eucalyptus citriodora
		Red Ironbark	Eucalyptus sideroxylon + cv
	G	Victorian Box (Tree Var) Shrub	Pittosporum undulatum
	H	Evergreen (Shamel) Ash	Fraxinus uhdei + cvs
		Crape Myrtle (Pink)	Lagerstroemia indica + cvs

Icon	Key	Plant Common	Botanical
	K	India Hawthorn (Shrub)	Rhaphiolepis indica + cvs
	L	Shiny Xylosma (Hedge)	Xylosma (senticosum) congestum + cv

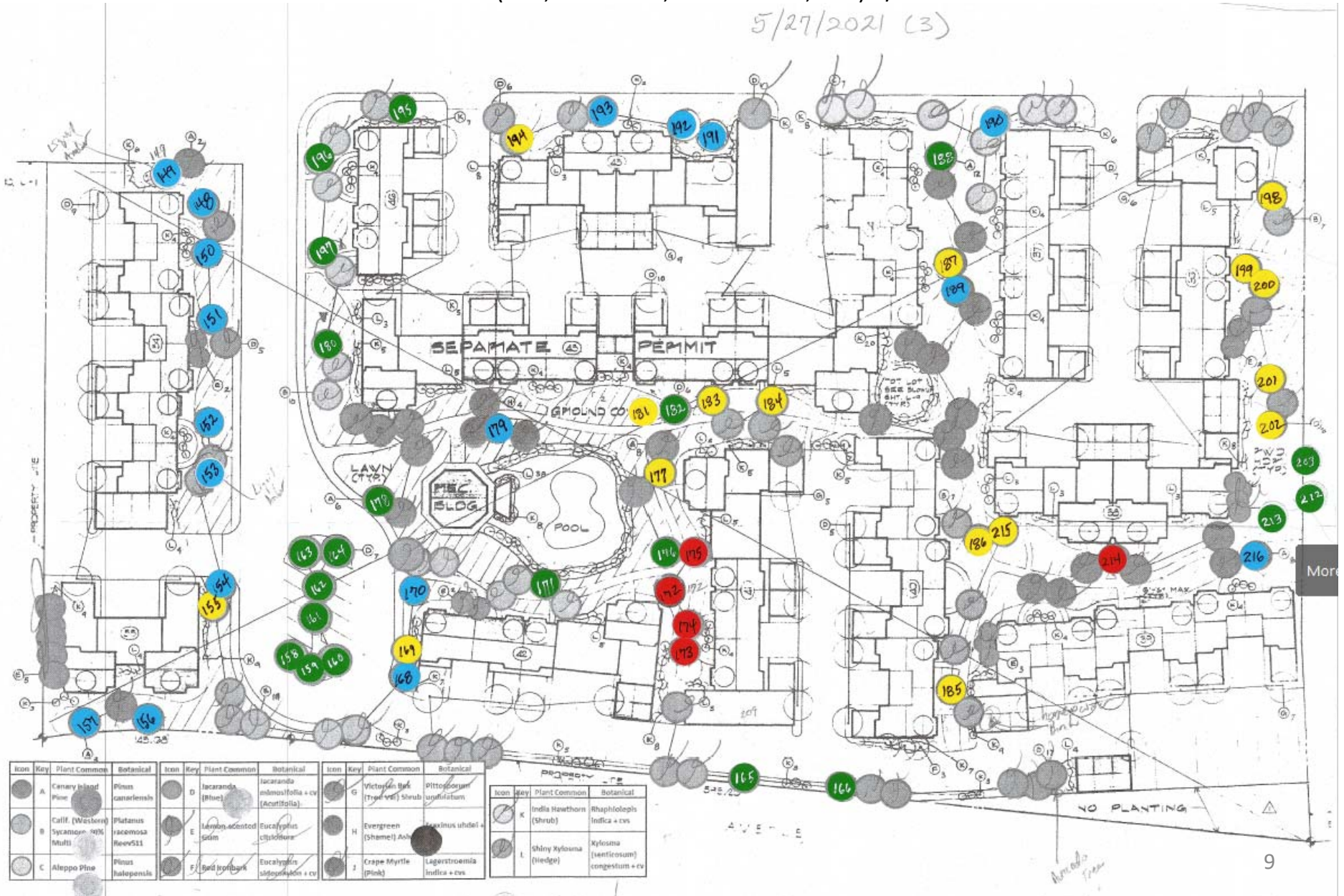
PLANTING PLAN
SCALE 1" = 30'-0"

Remove 117 trees Dramatically Reduce Life/Property Safety Risk

Red (Wind, Fire, Other Urgent)

Yellow (Fire, Structural, Tree to Tree, Etc.) 3/4

5/27/2021 (3)



More

Remove 117 trees Dramatically Reduce Life/Property Safety Risk

Red (Wind, Fire, Other Urgent)

Yellow (Fire, Structural, Tree to Tree, Etc.) 4/4

5/27/2021 (4)



Fill

Varsity Park HOA Site Tree Proposed for Removal By Tree Type

Loop	Unit Address	Street	VPHOA #	TrScps # (?)	Tree Name	Trunk Dia* 1'	Hght* 10'	Cnpy Dia* 5'	Tree-Fclty* 6'	Tree-Sdwlk* 6'	Tree-Tree* 6'	Life Sfty-Wind	Life Sfty-Fire	Facility Dmg	Tree Crwdng	#1 Remove	#2 Remove	Comment: Trees Subject To One of 4 Actions Based On Field Assessment/Analysis Of Tree Charateristics, Location and Life/Property Safety Factors Including VCFD Defence Space Code.
A Ash																6	15	21
1	15008	C Cmps Prk Dr	2	2	A	3	70	50	6	6	24	X	X	X	X	1		
1	15078	Pool Cmps Prk Dr	17	11	A	3	60	30		18	18				X		1	
1	15109	TotLot Cmps Prk Dr	36	27	A	3	60	50	6	18	18		X				1	
1	15109	TotLot Cmps Prk Dr	37	28	A	3	60	30	12	12	12	X	X		X		1	
2	15035	A Varsity St	98	95	A	4	70	60	18	6	12	X	X	X	X		1	
2	15007	B Varsity St	106	101	A	2	70	40	12	6	12	X	X	X	X		1	
2	15007	A Varsity St	108	102	A	2	70	40	6		12	X	X	X	X		1	
2	15007	A Varsity St	109	103	A	2	70	50	6		12	X	X	X	X		1	
2	6508	D Penn St	119	105	A	2	60	40	6		12		X		X		1	
3	14994	A Stanford	139	115	A	3	70	30	6	6		X	X	X			1	
4	6412	D Penn St	172	162	A	3	70	60	12	6	12	X	X	X	X	1		
5	15102	C Varsity St	208	193	A	4	70	50	6	6	12	X	X	X	X		1	
5	15122	B Varsity St	226	205	A	4	60	50	12	6	12	X	X	X	X		1	
5	15122	C Varsity St	230	206	A	4	60	50	18	6	12			X			1	
6	6440	D Marquette St	268	230	A	3	60	50	6	6	12	X	X	X	X		1	
6	6440	D Marquette St	269	231	A	2	70	50	18	6	12			X			1	
6	6462	A Marquette St	271	233	A	3	60	40	6	18		X	X	X			1	
6	6462	B Marquette St	273	236	A	3	70	50	12	6	18	X	X	X	X	1		
6	6542	B Marquette St	275	264	A	3	70	50	6	6		X	X	X	X	1		
6	6542	D Marquette St	277	266	A	4	70	50	6	18				X		1		
6	6564	A Marquette St	278	267	A	4	60	50	6	6		X	X	X	X	1		
AP Aleppo Pine																12		12
1	15109	C Varsity St	34	32	AP	3	60	40	12	6	24	X	X		X	1		
1	15109	D Varsity St	35	33	AP	3	60	40	12	6	24	X	X		X	1		
2	15137	G Varsity St	83	74	AP	4	70	60	12	6	24	X	X	X		1		
2	15137	B Varsity St	87	75	AP	3	70	50	18	6	12			X		1		
2	15137	B Varsity St	88	76	AP	4	70	50	6	6	12	X	X	X	X	1		
2	15077	A Varsity St	89	81	AP	4	70	70	6	6			X			1		
2	15077	C Varsity St	90	84	AP	3	60	40	6	6	12	X	X	X	X	1		
2	15077	D Varsity St	91	85	AP	3	60	50	6	6	12	X	X	X	X	1		
2	15049	B Varsity St	93	83	AP	3	60	60	6	6		X	X	X		1		
5	15136	E Varsity St	254		AP	3	60	40	18	6	18	X	X	X	X	1		
5	15136	D Varsity St	255	254	AP	4	60	40	12	6	18	X	X	X	X	1		
5	15136	C Varsity St	256	253	AP	4	70	50	6	12	18	X	X	X	X	1		Removed March 9, 2021 Wind Storm

Loop	Unit Address	Street	VPHOA #	TrSops # (?)	Tree Name	Trunk Dia* 1'	Hght* 10'	Cnpy Dia* 5'	Tree-Fcilty* 6'	Tree-Sdwk* 6'	Tree-Tree* 6'	Life Sfty-Wind	Life Sfty-Fire	Facility Dmg	Tree Crwdng	#1 Remove	#2 Remove	Comment: Trees Subject To One of 4 Actions Based On Field Assessment/Analysis Of Tree Charateristics, Location and Life/Property Safety Factors Including VCFD Defence Space Code.
CIP Canary Island Pine																7	23	30
1	15078	Pool	Cmps Prk Dr	10	8 CIP	3	70	40	6	6	24	X	X				1	
1	15078	Pool	Cmps Prk Dr	13	19 CIP	2	60	30		12	12				X		1	
1	15092	D	Cmps Prk Dr	20	16 CIP	2	60	40	6	6	12		X		X		1	
1	15123	B	Varsity St	40	35 CIP	2	70	40	12	6	12		X		X		1	
1	15123	C	Varsity St	41	38 CIP	2	70	30	6	6			X				1	
1	15124	B	Cmps Prk Dr	44	37 CIP	2	70	45	12	6	18		X	X			1	
1	15124	C	Cmps Prk Dr	45	39 CIP	3	70	45	12	6	24		X	X	X		1	
1	15124	D	Cmps Prk Dr	46	40 CIP	3	70	45	12	6	24		X	X	X		1	
1	15152	D	Cmps Prk Dr	58	48 CIP	2	70	40	12	6	12				X		1	
1	15166	F	Cmps Prk Dr	70	57 CIP	2	80	30	12	6	18		X		X		1	
1	15166	F	Cmps Prk Dr	71	58 CIP	2	80	40	12	6	18		X		X		1	
1	15166	E	Cmps Prk Dr	72	59 CIP	3	60	40	18	6	24		X				1	
2	15022	B	Cmps Prk Dr	112	109 CIP	3	70	50	6	6	12	X	X	X	X		1	
2	15022	B	Cmps Prk Dr	113	110 CIP	3	70	50	6	6	12	X	X	X	X		1	
2	15022	A	Cmps Prk Dr	114	111 CIP	3	70	50	6	6	12	X	X	X	X		1	
2	15022	A	Cmps Prk Dr	115	112 CIP	3	70	50	6	6		X	X	X			1	
2	6508	D	Penn St	121	121 CIP	2	60	40	6	6	12	X	X	X			1	
2	6508	D	Penn St	122	122 CIP	3	60	40	6	6	12	X	X	X			1	
2	6508	C	Penn St	123	123 CIP	2	60	50	6	6		X	X	X			1	
4	6438	A	Penn St	173	163 CIP	2	80	40	12	6		X	X	X			1	
4	6438	B	Penn St	174	164 CIP	2	80	50	6	6	12	X	X	X	X		1	
4	6438	C	Penn St	175	165 CIP	3	80	50	6	6	12	X	X	X	X		1	
4	6438	D	Penn St	177	167 CIP	1	80	40	6	6		X	X	X			1	
5	15102	B	Varsity St	209	192 CIP	2	70	40	6	12	18	X	X	X			1	
5	15066	C	Varsity St	214	177 CIP	3	90	50	6	6		X	X	X			1	
5	15112	E	Varsity St	218	201 CIP	3	80	40	6	6	12	X	X	X	X		1	
5	15110	B	Varsity St	223	200 CIP	3	80	40	6	6	12				X		1	
5	15188	B	Varsity St	238	220 CIP	3	70	50	12	6	12				X		1	
6	15194	A	Cmps Prk Dr	285	274 CIP	2	70	40	18	6	6				X		1	
6	6516	A	Marquette St	301	249 CIP	3	70	50	6	6		X	X	X			1	

Loop	Unit Address	Street	VPHOA #	TrScps # (?)	Tree Name	Trunk Dia* 1'	Hght* 10'	Cnpy Dia* 5'	Tree-Fcilty* 6'	Tree-Sdwk* 6'	Tree-Tree* 6'	Life Sfty-Wind	Life Sfty-Fire	Facility Dmg	Tree Crwdng	#1 Remove	#2 Remove	Comment: Trees Subject To One of 4 Actions Based On Field Assessment/Analysis Of Tree Charateristics, Location and Life/Property Safety Factors Including VCFD Defence Space Code.
J Jacaranda																0	20	20
1	15036	C Cmps Prk Dr	5	J	2	60	40	6	6	12	X	X	X	X		1		
1	15114	A Cmps Prk Dr	21	26 J	1	40	30	6	12	18				X		1		
1	15091	F Varsity St	26	25 J	2	60	30	6	6		X	X				1		
1	15109	A Varsity St	30	77 J	2	50	40	12	6			X				1		
1	15109	A Varsity St	31	78 J	2	50	30	6	6	6				X		1		
2	15050	F Cmps Prk Dr	99	87 J	1	60	50	6	6	12	X	X	X	X		1		
4	15004	F Varsity St	183	171 J	2	50	40	6	6		X	X	X			1		
4	15004	G Varsity St	184	172 J	2	50	50	6	6		X	X	X			1		
4	15006	A Varsity St	194	289 J	2	50	50	6	6		X	X	X			1		
5	15076	C Varsity St	199	190 J	2	60	50	6	6	12	X	X	X	X		1		
5	15076	B Varsity St	200	189 J	2	60	50	12	6	12	X	X	X	X		1		
5	15076	A Varsity St	201	188 J	1	60	50	6	18		X	X	X			1		
5	15076	A Varsity St	202	187 J	1	50	30	6	18	18	X	X	X			1		
5	15102	E Varsity St	205	197 J	1	40	30	6	6	12	X	X	X	X		1		
5	15102	D Varsity St	207	195 J	1	50	40	12	6	12	X	X	X	X		1		
6	6516	F Marquette St	295	J	2	50	45	6	6		X	X	X			1		
6	6516	F Marquette St	296	259 J	1	40	30	6	6	12	X	X	X	X		1		
6	6516	C Marquette St	300	255 J	2	60	50	6	6	12	X	X	X	X		1		
6	6488	B Marquette St	304	246 J	3	60	50	6	6		X	X	X			1		
6	6488	A Marquette St	305	245 J	2	60	50	6	6	18	X	X	X	X		1		
LA Liquid Amber																0	2	2
1	15092	A Cmps Prk Dr	19	13 LA	2	60	20	6	6	18				X		1		
4	15004	E Varsity St	181	169 LA	1	40	20	6	12	18				X		1		

Loop	Unit Address	Street	VPHOA #	TrSops # (?)	Tree Name	Trunk Dia* 1'	Hght* 10'	Cnpy Dia* 5'	Tree-Fcilty* 6'	Tree-Sdwk* 6'	Tree-Tree* 6'	Life Sfty-Wind	Life Sfty-Fire	Facility Dmg	Tree Crwdng	#1 Remove	#2 Remove	Comment: Trees Subject To One of 4 Actions Based On Field Assessment/Analysis Of Tree Charateristics, Location and Life/Property Safety Factors Including VCFD Defence Space Code.
S Sycamore																3	28	31
1	15036	E Cmps Prk Dr	6	4	S	2	40	50	6	6	18	X	X	X	X		1	
1	15114	D Cmps Prk Dr	22	22	S	2	60	50	6	6	12	X	X	X	X		1	
1	15123	D Varsity St	42	41	S	3	60	40	6	6			X			1		
1	6515	C Marquette St	63	261	S	3	60	50	12	6	18		X				1	
1	6515	C Marquette St	64	260	S	2	60	50	6	6	18		X	X			1	
1	15166	D Cmps Prk Dr	73		S	3	60	60	12	6	12		X				1	
1	15166	B Cmps Prk Dr	75		S	3	70	70	12	6			X	X			1	
1	15166	A Cmps Prk Dr	77		S	2	70	60	6	6	12		X	X	X		1	
2	15050	C Cmps Prk Dr	101	92	S	2	60	50	6	6	18	X	X	X	X		1	
2	15007	E Varsity St	102	94	S	2	70	40	12	6		X	X	X			1	
2	6508	A Penn St	125	125	S	2	50	40	6	6	12	X	X	X			1	
2	6508	A Penn St	127	127	S	3	50	40	6	6	6	X	X	X	X		1	
2	15021	D Varsity St	131	131	S	3	70	50	6	6	12	X	X	X			1	
2	15021	G Varsity St	134	132	S	3	70	45	12	6		X	X	X		1		
3	14996	A Cmps Prk Dr	136	292	S	2	60	40	12	6	12	X	X				1	
3	14994	B Stanford	142		S	1	40	20	6	6	12				X		1	
3	6409	A Penn St	155	149	S	3	70	50	12	6	12	X	X	X	X		1	
4	6412	A Penn St	169	158	S	3	60	50	6	6	12	X	X	X	X		1	
4	15034	B Varsity St	185	173	S	4	70	50	6	6		X	X	X			1	
4	15034	D Varsity St	186	175	S	3	70	50	6	6		X	X	X			1	
5	15076	D Varsity St	198	194	S	2	70	50	6	12		X	X	X			1	
5	15066	A Varsity St	215	176	S	2	60	40	6	6		X	X	X			1	
5	15122	TotLot Varsity St	233	212	S	2	60	40		12	12				X		1	
5	15160	B Varsity St	241	214	S	2	50	40	12	6	18	X	X	X			1	
5	15160	C Varsity St	242	215	S	2	50	40	6	6	18	X	X	X		1		
5	6453	A Marquette St	246	240	S	3	50	40	6	6		X	X	X			1	
5	6453	B Marquette St	248	241	S	2	50	40	6	6	12	X	X	X	X		1	
5	6453	C Marquette St	249	242	S	3	60	30	6	6		X	X	X			1	
6	6590	D Marquette St	289	278	S	2	50	30		6	18		X		X		1	
6	6590	B Marquette St	292	279	S	2	60	40	6	12	18	X	X	X			1	
6	6590	A Marquette St	294	263	S	3	70	50	6		18	X	X	X			1	
UK Unknown																1		1
1	15091	E Varsity St	27		UK	1	40	30	6	6		X	X			1		

Remove Trees Total 29 88

117

Part 1: Justification for Proposed Tree Removal: Moorpark City Requirements Summary

Moorpark City Code 12.12.070 and 12.12.080 Requires Show Cause For Tree Removal - VPHOA Summary Of Factors

- Danger of Collapse
- Distance To Structure
- Distance Tree to Tree
- Wrong Tree In Wrong Place

12.12.080 Tree removal permits—Standards for grant or denial.

A. The condition of the tree with respect to disease, danger of collapse of all or any portion of the tree, proximity to an existing structure, or interference with utility services or, in the case of a native oak tree, interference with an addition to an existing single-family detached home;

12.12.080 Tree removal permits—Standards for grant or denial.

F. The suitability of the tree species for use in that location. (Ord. 101 § 1, 1988)

12.12.070 Tree removal permits—Requirements.

D. Project Approval Required. No tree removal permit shall be issued for the removal of any tree on any lot associated with a proposal for urban development unless the project has been approved by the city or unless the director of community development, or designee, determines that the immediate removal of the tree is required because of the condition of the tree with respect to disease, danger of collapse of all or any portion of the tree, proximity to an existing structure, or interference with utility services.

Part 2 Justification for Proposed Tree Removal: Automatic With Proposed VPHOA Compliance With VCFD Fire Defense Area Code

Details of VCFD Defense Area Code Compliance Requirements/Moorpark City Tree Removal Justification Requirements	Trees Requested To Be Removed Are Per Code & Historical Record - High Life/Property Safety Risk To Be Cured Per VCFD Fire Defense Area Code Major Problems Include: ● High Density Planting of ● Wrong Trees - too large ~ 60'h x ~45'dia. & not fire nor wind resistant ● in Wrong Place - Close to Structures ~< 12' & Each Other - canopies merge				
	Wrong Tree	Danger Collapse	Danger Fire Hazard	Danger Structure Damage	Danger Fire & Tree Health
	Wrong Place	Wind	Fire	Sewer & Water lines, sidewalks, foundations	Tree Canopy Crowding
VCFD STANDARD 515 DEFENSIBLE SPACE AND FUEL MODIFICATION ZONES					
VCFD Defensible Space/FMZ zones defined:					
Zone A: This is a limited-planting area within 30 feet of structures and slopes, not greater than 20 percent; 50 feet when slopes are greater than 20 percent.					
Zone B: This is the area from outer edge of Zone A to 100 feet from structures.					
Zone C: This is considered a thinning zone and is any FMZ greater than 100 feet from structures.					
Chapter 3 Requirements By Fuel Modification Zone (FMZ)					
3.1 Zone A - < 30' from Structures					
3.1.1 0-5 Feet from structure. No Trees. This is a recommended no-planting zone.	X	X	X	X	
3.1.2 5-30/50 feet from structure. trees of a very fire resistive-type and additional spacing. Trees should be spaced to allow minimum 10 feet of clearance next to a structure. Also see Fire Department FMZ Spacing Table 3.	X	X	X	X	X
3.1.3 Limitations. Plants and trees identified as "Target" (undesirable plants) by the Fire Department shall not be planted within Zone A. See Fire Department Plant Reference Guide.	X	X	X		
3.2 Zone B. Follow Table 3 Fire Department FMZ Spacing.					

Part 2 Justification for Proposed Tree Removal: Automatic With Proposed VPHOA Compliance With VCFD Fire Defense Area Code

<p>Details of VCFD Defense Area Code Compliance Requirements/Moorpark City Tree Removal Justification Requirements</p>	<p>Trees Requested To Be Removed Are Per Code & Historical Record - High Life/Property Safety Risk To Be Cured Per VCFD Fire Defense Area Code</p> <p>Major Problems Include:</p> <ul style="list-style-type: none"> ● High Density Planting of ● Wrong Trees - too large ~ 60'h x ~45'dia. & not fire nor wind resistant ● in Wrong Place - Close to Structures ~< 12' & Each Other - canopies merge 				
	Wrong Tree	Danger Collapse	Danger Fire Hazard	Danger Structure Damage	Danger Fire & Tree Health
	Wrong Place	Wind	Fire	Sewer & Water lines, sidewalks, foundations	Tree Canopy Crowding
<p>Table 3 - Fire Department fuel modification zone (FMZ) Spacing Type of Vegetation : Single Tree % of Slope: <20% Min Spacing* : 10 feet * Spacing Notes: a. Spacing is measured canopy to canopy at maturity.</p>	X		X		X
3.4 Additional Requirements.					
3.4.1 Highly Flammable Trees. Highly flammable trees are not allowed, unless approved by the Fire Prevention Bureau.	X		X		
3.4.2 Tree Spacing. The horizontal distance between crowns of trees and crowns of adjacent trees, overhead electrical facilities, or unmodified fuel shall not be less than 15 feet.	X		X		X
3.4.3 Roof Clearance. The vertical clearance distance above any roof shall not be less than 3 feet.	X	X	X		
3.4.4 Chimney Clearance. The horizontal and vertical clearance to any chimney or heat-producing device shall not be less than 10 feet.					
3.4.5 Limbing of Trees. Trees exceeding 6 feet in height shall be limbed up from the ground 5 feet or 1/3 the height of the tree, whichever is less.					
3.4.6 Maintenance. All plants and trees, including dried palm fronds, shall be maintained free of deadwood, leaves, and limbs that can increase ability to ignite and/or carry fire.	X	X	X		

Part 2 Justification for Proposed Tree Removal: Automatic With Proposed VPHOA Compliance With VCFD Fire Defense Area Code

Details of VCFD Defense Area Code Compliance Requirements/Moorpark City Tree Removal Justification Requirements	Trees Requested To Be Removed Are Per Code & Historical Record - High Life/Property Safety Risk To Be Cured Per VCFD Fire Defense Area Code Major Problems Include: <ul style="list-style-type: none"> ● High Density Planting of ● Wrong Trees - too large ~ 60'h x ~45'dia. & not fire nor wind resistant ● in Wrong Place - Close to Structures ~< 12' & Each Other - canopies merge 				
	Wrong Tree	Danger Collapse	Danger Fire Hazard	Danger Structure Damage	Danger Fire & Tree Health
	Wrong Place	Wind	Fire	Sewer & Water lines, sidewalks, foundations	Tree Canopy Crowding
3.4.7 Tree Litter. Tree litter shall not exceed 2 inches in depth underneath tree canopies.	X		X		
3.4.8 Tree Canopy Clearance. Where tree canopies touch or extend past the 100-foot defensible space zone, there shall be a clear area from the edge of the tree canopy to the brush of not less than 15 feet, which may require clearance outside the 100-foot zone.					
3.4.9 Roofs and Gutters. Roofs and gutters on buildings shall be maintained free of any leaves, needles, or other vegetative materials.	X	X	X		X
3.4.11 Irrigation. Irrigation is not required for any defensible space or FMZ.					
3.5 Modifications. Modifications to this standard may be allowed on a case-by-case basis after review and approval of a planting and maintenance plan. Requests shall be submitted to the Fire Prevention Bureau FHRP Unit.	X	X	X	X	X
Chapter 4 Existing Installations					
4.1 Compliance. When required by the Fire Department, existing defensible space/FMZs installed prior to the date of this standard shall require retrofitting, including thinning and or removal of plants, trees, and vegetation, to meet this standard.	X	X	X	X	X

Part 2 Justification for Proposed Tree Removal: Automatic With Proposed VPHOA Compliance With VCFD Fire Defense Area Code

<p>Details of VCFD Defense Area Code Compliance Requirements/Moorpark City Tree Removal Justification Requirements</p>	<p>Trees Requested To Be Removed Are Per Code & Historical Record - High Life/Property Safety Risk To Be Cured Per VCFD Fire Defense Area Code</p> <p>Major Problems Include:</p> <ul style="list-style-type: none"> ● High Density Planting of ● Wrong Trees - too large ~ 60'h x ~45'dia. & not fire nor wind resistant ● in Wrong Place - Close to Structures ~< 12' & Each Other - canopies merge 				
	Wrong Tree	Danger Collapse	Danger Fire Hazard	Danger Structure Damage	Danger Fire & Tree Health
	Wrong Place	Wind	Fire	Sewer & Water lines, sidewalks, foundations	Tree Canopy Crowding
<p>4.1.1 Timing. Upon notification by the Fire Department, work to bring an existing defensible space and FMZ into compliance with this standard may be done over a four-year period. First year, an initial 30 feet from structure(s), then an additional 25 feet for each subsequent year</p>	X	X	X	X	X
<p>VCFD GUIDELINE 410 PROHIBITED PLANT LIST</p>					
<p>....list of plants and trees that are NOT allowed within a new required defensible space (DS) or fuel modification zone (FMZ). It is highly recommended that these plants and trees be thinned and or removed from existing DS and FMZs</p>					
<p>Remove Canary Island & Aleppo Pine</p>	X	X	X	X	X
<p>VCFD Fire Hazard Reduction Unit - Plant Reference Guide April 2019</p>					
<p>TARGET (Undesirable Plants) SPECIES ARE DESIGNATED WITH AN *. They are NOT ALLOWED within 30' of structures. Some may not be allowed within 50 -100' of structures - designated with (50 /100) after name. It is highly recommended that these plants be removed from any existing defensible space zone.</p>					
<p>Remove Large Ash* Varieties</p>	X	X	X	X	X